



Today's energy industry decision makers work within an interconnected world. They require global access to critical information. Anytime. Anywhere.

The combination of the IHS Meridian™ platform and the IHS Navigate™ application provides our valued customers with unparalleled access to IHS Exploration & Production (E&P) information and technical reporting content that is global, innovative, and fast.

Answers without asking

Navigate's unique workflow driven interface supports a variety of users and markets. Predefined dashboards and a map-centric search engine enables users to discover, display and deliver answers without users requiring knowledge of underlying data models and technologies.

Exploration is limitless. Your access to information should be as well.

Global interface for global customers

All Meridian based applications provide single point access into IHS global information, assuring data consistency. With multi-language functionality customers can search for and discover information using the language of their choice.

Innovative design for today's customer and tomorrow's need

The state-of-the-art workflow driven interface reduces user learning and adoption time. The integrated search and map functionality enables users to get answers quickly. The interface design focuses on ease of use and a consistent user experience whether you are using a desktop, tablet or mobile device.

Fast access. Faster answers.

Meridian and Navigate bring leading hardware and software technologies to enable 24/7 global uptime even during information updates. Advanced search and filtering technologies handle and display large amounts of global data in seconds.

Capability Overview

IHS Navigate is your gateway for accessing global E&P information and technical reporting content - in one application. It's global, innovative, and fast.

Core Functionality

- Single portal to E&P data
- Geo-tagged documents on the map
- Map-centric and workflow driven user interface
- Pre-defined dashboards
- Multi-unit, multi-language
- Data overlays prior to searching
- Exclusive daily updates for international critical information

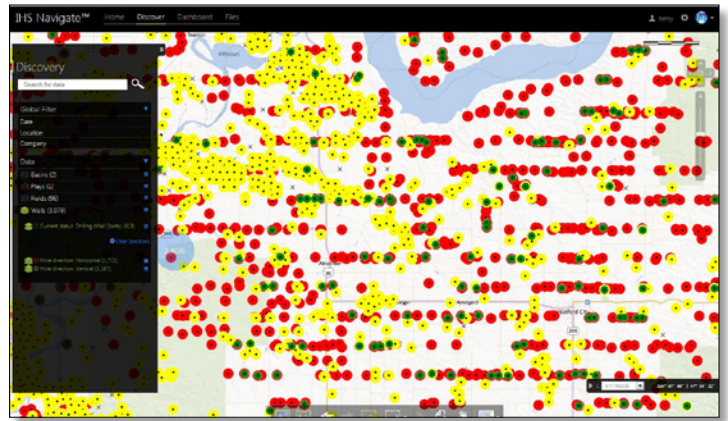
Who Uses Navigate?

The initial release of Navigate has been designed for new ventures, global exploration, and merger & acquisitions. Future releases will have increased functionality for the geo-technical community.



New ways to find what you're looking for

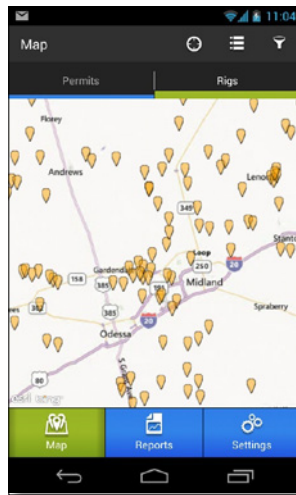
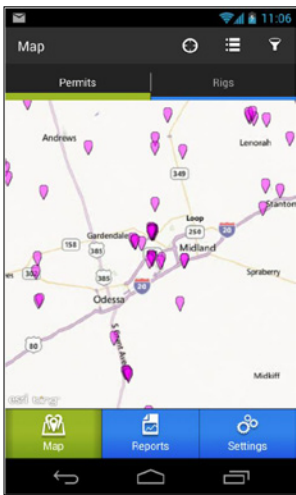
In Navigate the data is the interface. Users can quickly locate and access available information without searching. The tight integration between the map and the discovery panel keeps any filters and results at your fingertips.



Navigate's patent pending preview layers allows users to examine trends without complex filters and spatial layers.



A connected world needs mobile technology



Mobile support has been a key consideration in development of Meridian platform. Navigate mobile companion apps are an integral part of the Navigate user experience and provide special functionality and tuned workflows for mobile users. IHS Activity Tracker is the first such application providing up-to-date information on U.S. Rig and Permit activity, running on major mobile platforms.

For more information contact your Account Manager

www.ihs.com

Asia & Pacific

Email: APAC_Lead@ihs.com
Tel: +65 6576 5300

EMEA

Email: emea.marketing@ihs.com
Tel: +44 (0) 1344 328300

Canada

Email: sales.cdn@ihs.com
Tel: +1 403 770 4646

United States

Email: sales.energy@ihs.com
Tel: +1 888 OIL DATA

