

Rushmore: Completions Performance Review

World's leading peer-to-peer upstream performance benchmarking community

TESTIMONIAL

“Chevron uses Rushmore Reviews to benchmark our performance in both drilling and completions, and furthermore to measure shale field performance and subsea BOP reliability. The Rushmore data is key for gauging our performance internally and against competitors to ensure we are always competitive. We have been very successful in using the Reviews to reduce the uncertainty in new country entry cost estimating and well planning, making new ventures more profitable.”

Matt Albers, UC D&C Engineer, Chevron, USA, 2019

Rushmore's Completions Performance Review (CPR) is the leading platform for oil and gas Operators to share, discuss and analyse global completions data.

Why should Operators participate in the Completions Performance Review?

Since 1994, Operators have been sharing well completions data through the CPR. Participating in the CPR allows you to:

- Establish your competitive performance: Compare your performance amongst key peer groups in time, cost and applied technology
- Provide a driver for improvement: Learn from faster or more cost effective Operators, use this data to accelerate improvement
- Design and plan wells: Engineers can study offset well data and schematics during the well design phase to consider how Operators of nearby wells react to the challenges in terms of completion equipment choices and configuration (sand control techniques and hardware, tubing, production casing, artificial lift, zonal isolation equipment etc.)
- Plan and budget for wells in new areas: Access technical, time and cost data on thousands of land, offshore (platform and subsea) wells from over 60 countries. Use this data to evaluate the viability of future prospects

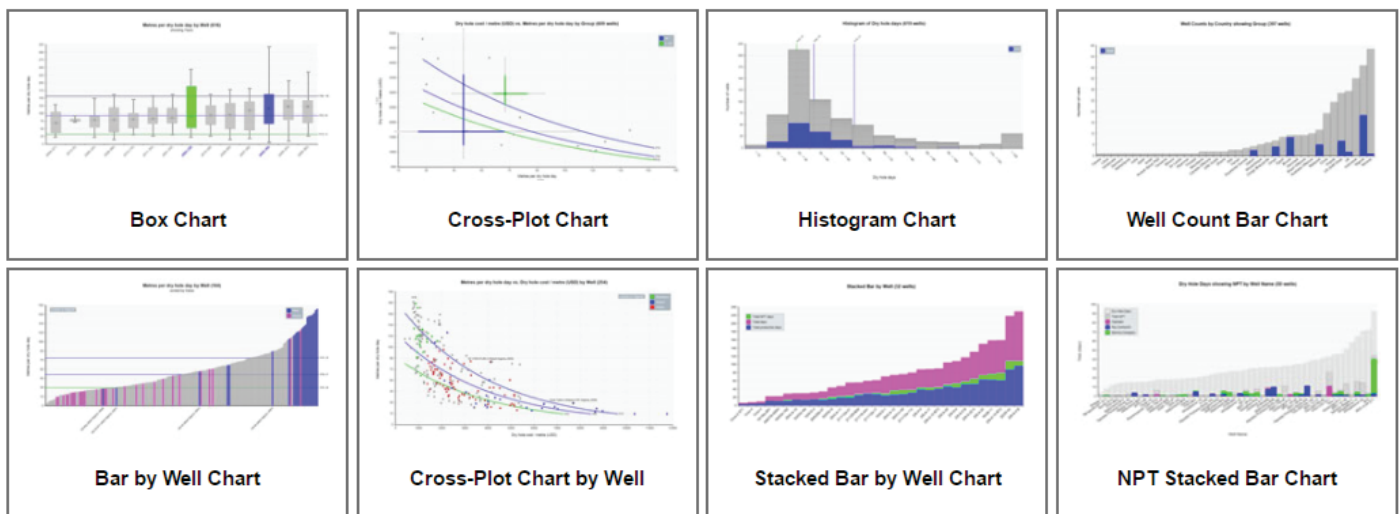
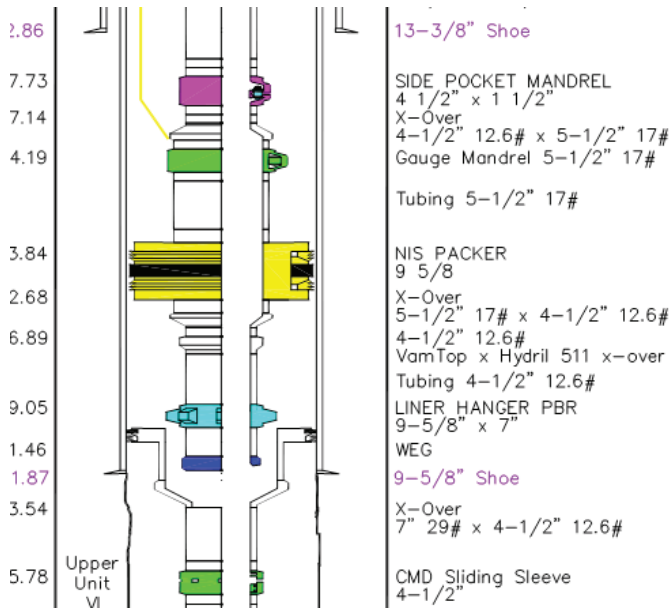
How does participation work?

- An Operator contracts to participate in at least one country for at least one year
- The Operator provides data on all wells it completes that year in each country in which it is participating
- The data is independently quality checked and published on the website
- Access to other Operators' data for that year is provided
- Other Operators' data from 1994-1999 provided free of charge
- An Operator may also participate retrospectively
- If an Operator provides all of its wells, the Operator receives access to data in all countries, even if it has not performed completions there

CPR Deliverables

The Completions Performance Review contains approximately 140 total data fields, performance metrics for any set of wells, a host of charting options and a detailed schematic diagram for every completion. Some examples of what we provide include:

- Well details: name, location, type, general description and wellbore characteristics (deviation, expected max pressure, temp. H2S, Co2)
- Lower completion technical details (sand control and zonal isolation equipment, production casing)
- Upper completion technical details (including artificial lift type, tubing size, material, length, XT type etc.)
- Workover details and remedial work
- Operations time details: phase durations (including NPT and WoW), main causes of NPT, rig and equipment type used (e.g. derrick, wireline, coiled tubing etc.)
- Perforating and stimulation operation details (conveyance method, number of runs, type of stimulation)
- Costs of completion operations



For more information www.ihsmarkit.com

CUSTOMER CARE

NORTH AND SOUTH AMERICA

T +1 800 447 2273
 +1 303 858 6187 (Outside US/Canada)

EUROPE, MIDDLE EAST AND AFRICA

T +44 1344 328 300

ASIA PACIFIC

T +604 291 3600

E CustomerCare@ihsmarkit.com

About IHS Markit

IHS Markit (Nasdaq: INFO) is a world leader in critical information, analytics and solutions for the major industries and markets that drive economies worldwide. The company delivers next-generation information, analytics and solutions to customers in business, finance and government, improving their operational efficiency and providing deep insights that lead to well-informed, confident decisions. IHS Markit has more than 50,000 key business and government customers, including 80 percent of the Fortune Global 500 and the world's leading financial institutions. Headquartered in London, IHS Markit is committed to sustainable, profitable growth.