



Kingdom Analytics Explorer

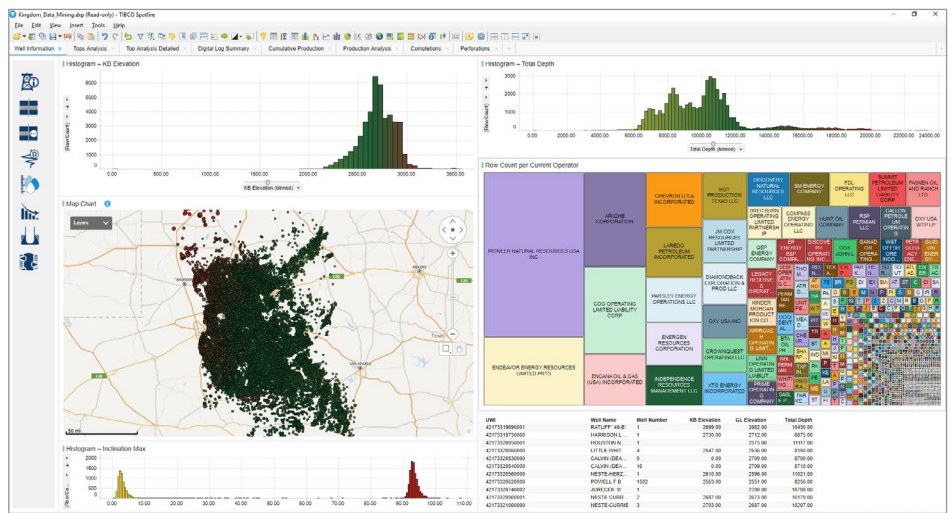
For Spotfire®

Unleash new and powerful ways to exploit your data with an instant, interactive connection between your Kingdom project and Spotfire. Improve your workflow and get more value from your data.

Kingdom Analytics Explorer for Spotfire provides an **interactive connection** between Spotfire's analytic engine and the Kingdom databases. This innovative connection enables Kingdom users to better visualize the data, QC, filter, and run data **analytics** on their **full range** of data within Spotfire.

Kingdom Analytics Explorer for Spotfire takes the guesswork out of Analytics with its simplified platform and **pre-loaded templates**, allowing users **instant access** to their Kingdom Project data.

Every member of the team will **benefit** from this module, from completing tasks with more **efficient data QAQC** to **multivariant production analytics**.



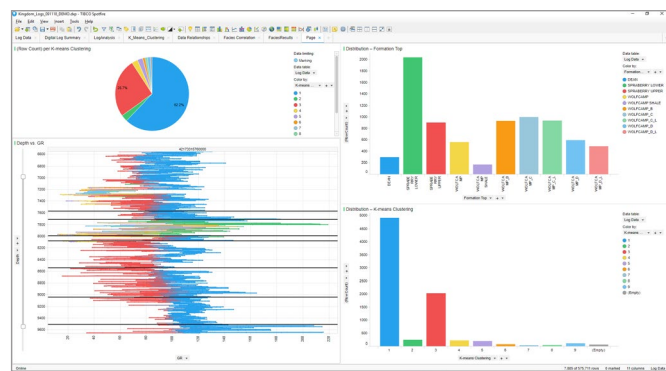
Time Saving Advantages – No need to export/import data from your database to your analytics engine. Kingdom Analytics Explorer for Spotfire interactively connects your database to Spotfire. Benefits team members from ALL disciplines

Identified Users

- Geo Techs
- Data Loaders
- Geologists
- Geophysicists
- Petrophysicists
- Engineers
- Exploration Managers
- Data Scientists
- Developers

Accessible Data

- Wells
- Deviation surveys
- Formation tops
- Digital logs
- Zone properties
- Completion data
- Perforations
- Monthly production
- Grids



- **Data QA/QC** – Better understanding of data leads to better results. Make corrections to data errors instantly.
- **Discover New Relationships** – Interpreters will have access to their full Kingdom data, set allowing for in-depth analysis of multiple data types. Create new data sets and write the data back to your Kingdom project.
- **Analytics on Grid Attributes** – Interpreters can access grids and grid properties, allowing advanced analytics to be performed.

Everyday Workflows Improved

- Data QAQC: quickly find outliers and open those wells in Kingdom to make instant corrections
- Facies analysis:
 - Facies interpretation based on Log data using supervised or unsupervised classification techniques
 - Mapping facies based on any attribute grids (i.e. seismic, geological, petrophysical, geomechanical, etc.)
 - New generated data from data analytics workflows can be saved directly into Kingdom database (zone attributes, control points, logs)
 - Predict well performance and identify optimum engineering parameters

Create Dashboards:

- Production analysis:
 - Which is your most prolific reservoir?
 - Which well is seeing a production decline?
- Completion analysis: Which are the most successful completion types?
- Competitor analysis: Which leases will be expiring soon in the sweet spot?
- Production Prediction: What attributes are driving the best producing wells in your reservoir?
- Well Design: What are the recommended parameters to drill your next well?



For more information www.ihsmarket.com

CUSTOMER CARE

NORTH AND SOUTH AMERICA

T +1 800 447 2273
 +1 303 858 6187 (Outside US/Canada)

EUROPE, MIDDLE EAST AND AFRICA

T +44 1344 328 300

ASIA PACIFIC

T +604 291 3600

E CustomerCare@ihsmarket.com

About IHS Markit

IHS Markit (Nasdaq: INFO) is a world leader in critical information, analytics and solutions for the major industries and markets that drive economies worldwide. The company delivers next-generation information, analytics and solutions to customers in business, finance and government, improving their operational efficiency and providing deep insights that lead to well-informed, confident decisions. IHS Markit has more than 50,000 key business and government customers, including 85 percent of the Fortune Global 500 and the world's leading financial institutions. Headquartered in London, IHS Markit is committed to sustainable, profitable growth.