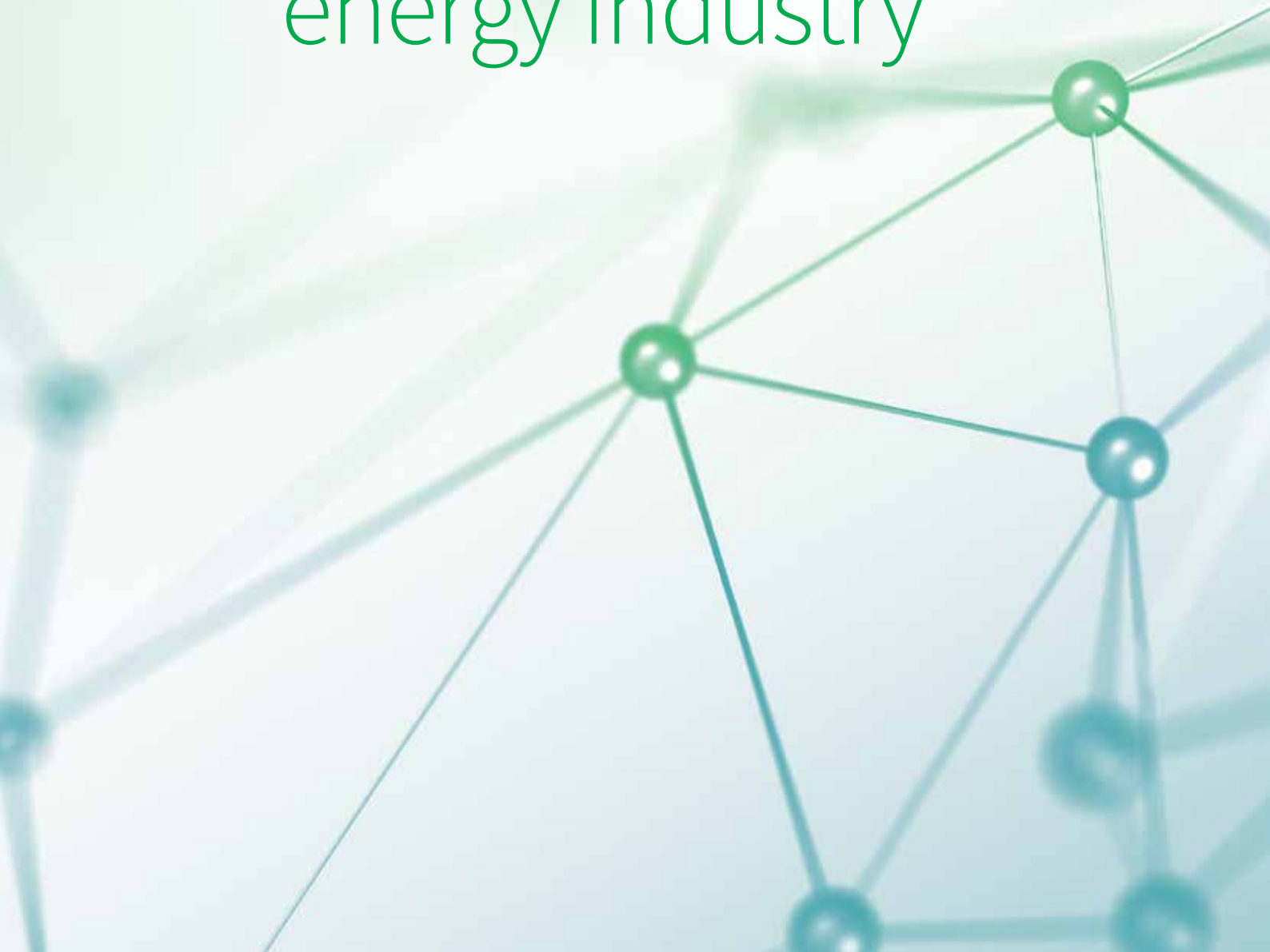




IHS Markit™

EDM: Data management solutions for the energy industry



EDM is a flexible data management platform that pulls disparate data types from multiple sources into a central hub.

- Create consistent versions of the truth in a traceable, fully audited environment.
- Benefit from greater control, ongoing compliance and transparent data.
- Understand where data came from, who touched it and which rules were applied.
- Distribute data to analytics and business intelligence platforms.

200+
clients globally

40+
managed services clients

24 x 7 x 365
global support





Governance

Stewardship of data assets



Quality

Validated, enriched and reconciled data



Aggregation

Aggregate, analyse and normalise proprietary and third-party data



Lineage

Look-through hierarchy and side-by-side source data comparison



Integration

Elimination of silos and consolidation of systems



Distribution

The right format at the right time

CUSTOMERS

Banks

Commodity traders

E&P companies

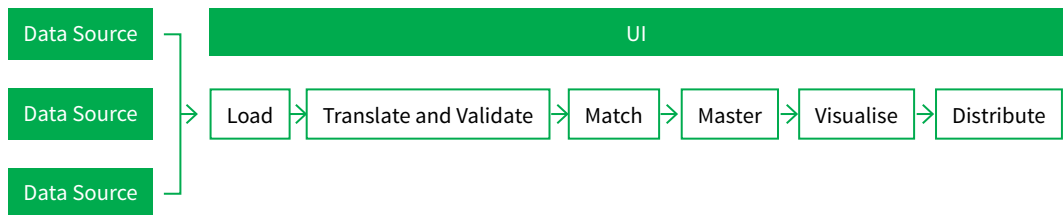
Hedge funds

Integrated oil and gas companies

Mid-stream oil and gas companies

Regulators

Service providers



Multiple data providers

Reference data

Reduce data inconsistencies and improve analytical capabilities with good quality, timely reference data masters

Wells

Integrate well reference data and maintain data consistency

Production

Maintain historical time-series production datasets from multiple sources and combine with analytical outputs

Assets

Owner, operator and transaction data

Fully extensible

Central management of all datasets, including fields, plays, basins, completions and logs

E&P data

Capture unique and related datasets, run side-by-side comparisons and define flexible rules

Master datasets

Aggregate vendor and proprietary data in a variety of formats to create consistent, validated datasets

Data interrogation

Logical access to the right data fast

Workflows

Empower users to define and own business workflows across disparate datasets

Lineage

Confidence and visibility in data source, raw data and transformations over time

Metadata

Allow metadata and comments to be added by users, time-stamped, indexed and reported

Analytics

Distribute data to analytics and BI platforms

GIS-ready

Geospatially-enabled to leverage ArcGIS and other tools

Analysis

Feed combined datasets into BI tools and analytics platforms with ease

Roundtrip

Create the valid dataset for analysis and capture the results post processing

Master Data Management (MDM)

Establish best practices across the firm, create analysis and reporting based on reliable, good quality data

Well

Use as the master data management platform for all datasets with well as reference

Asset

A single view of an asset, owner or operator

Play, basin

Aggregate on any level, storing granular masters on any attribute

Integration

Integrate multiple systems, applications and processes and maintain control of mission-critical data

Analytics

Reformatting and distribution for subscribing analytics and BI tools

Data hub

Bi-directional integration layer for data feeds

Reconciliation

Reconcile E&P data and compare internal and external sources

Data optimisation

Efficient use of vendor datasets, including harnessing the best quality data at the best possible value

Managed services

EDM managed services leverage IHS Markit's MDM templates to standardise and accelerate implementation. IHS Markit also provides the expertise and resources to simplify data management, reduce costs and retain control of data.

Time to market

Focus on core business and revenue-enhancing opportunities

Operational efficiency

Break down silos, increase scalability and flexibility

Cost reduction

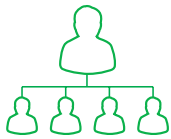
Reduce fixed costs and expenditures

Rationalise vendors

Consolidate relationships

Compliance

Facilitate faster, integrated and more accurate regulatory reporting



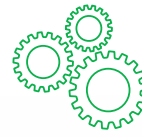
User admin and entitlement



Interface management



Offsite services and change management



Exception automation review



App patches and upgrades



Infrastructure services

About IHS Markit

IHS Markit (Nasdaq: INFO) is a world leader in critical information, analytics and solutions for the major industries and markets that drive economies worldwide. The company delivers next-generation information, analytics and solutions to customers in business, finance and government, improving their operational efficiency and providing deep insights that lead to well-informed, confident decisions.

IHS Markit has more than 50,000 key business and government customers, including 85 percent of the Fortune Global 500 and the world's leading financial institutions. Headquartered in London, IHS Markit is committed to sustainable, profitable growth.

For more information about EDM,
please visit: markit.com/product/EDM

or contact us directly on:
sales@ihsmarkit.com