



# EDM Base

## Powering Data Exploration

Increase productivity with enterprise-wide access to IHS Markit North America Energy data subscriptions via EDM Base – the purpose built software solution for Energy data access and analysis.

### BENEFITS:

- Increase efficiency with fast access to IHS Markit data
- Reduce dependency on developers, web services and time-consuming data exports
- Utilize existing Business Intelligence (BI) tools for complex analysis
- Provide access to unlimited users within your organization
- Proven technology, underpinned by more than 250 staff globally

EDM Base provides direct access to IHS Markit's North American data with integrated geospatial and business intelligence capabilities to support data visualization and analysis needs. Access data using EDM Base's web-based user interface or easily integrate IHS Markit data into other systems or workflows with direct access to the content in a Microsoft SQL Server database.

Automated daily data updates monitored by IHS Markit guarantee you are always accessing the most current data available with any changes to the data clearly highlighted to users.

Data integration capabilities include automated functionality to create and update user-defined SQL Views, AOI data lists, and custom Spatial Layers.

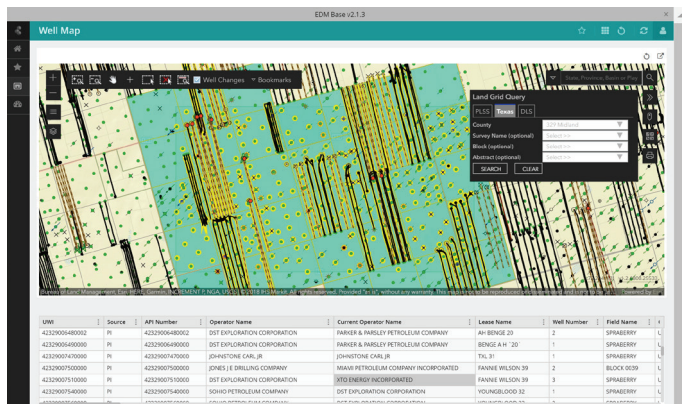
EDM Base offers an upgrade path to Enterprise Data Management (EDM) which allows IHS Markit, proprietary, and third party data to be managed centrally with a suite of advanced data quality, aggregation and workflow tools.

EDM Base is built on our EDM platform used by more than 200 of the largest financial companies in the world.

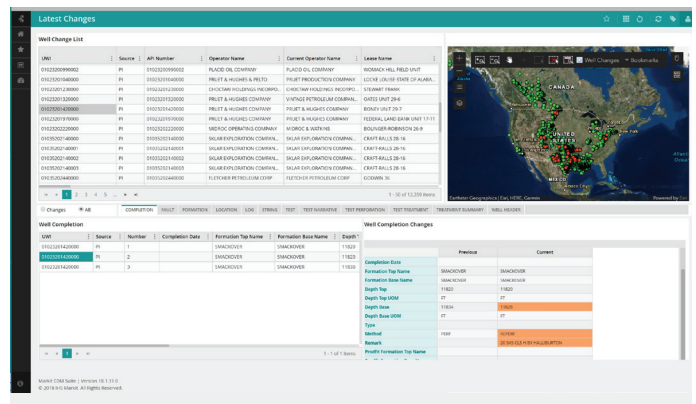
### Ready-to-use solution

- Out-of-the-box Tibco® Spotfire®, Microsoft PowerBI, and ESRI ArcGIS™ templates so you are productive immediately
- Designed to work with Esri Enterprise GIS to provide a rich mapping experience
- Microsoft Active Directory integration allows control of user access and rights and rights

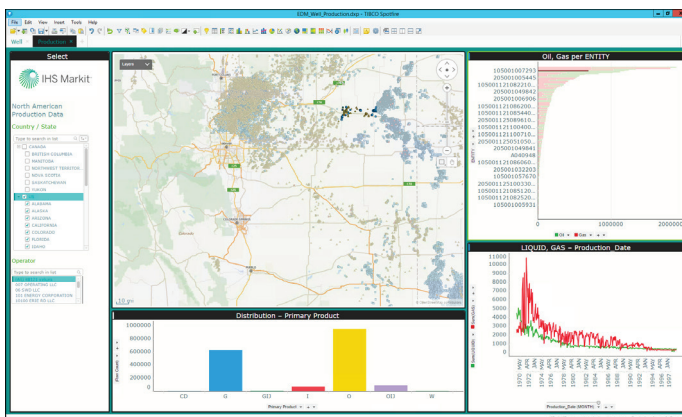
## Quickly analyze IHS Markit data via common business intelligence and spatial applications



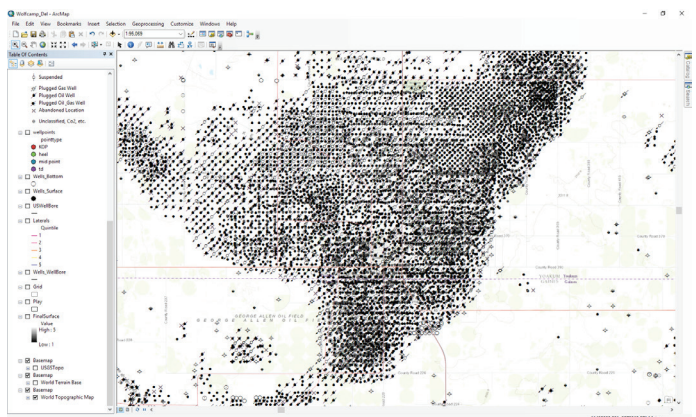
EDM Base Web Map interface



Delta and historical changes for each Well and Production attribute



Easy access to Spotfire templates



Easy access to ArcMap templates

## Datasets currently available in EDM Base includes:

- North American Well & Production Data
- Interpretation Ready North American Well & Production Data by Performance Evaluator
- U.S. Rig Activity History
- U.S. Production Summary
- U.S. PRODFit Data - interpreted tops database

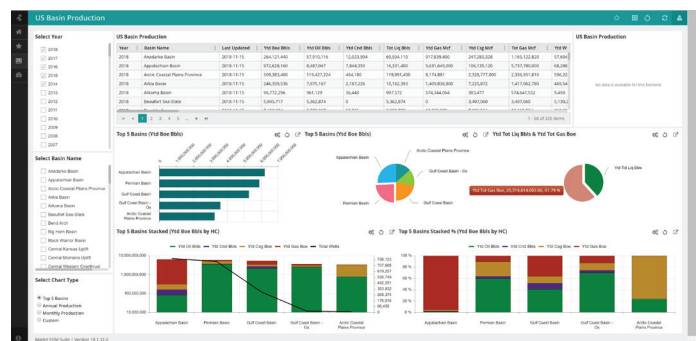


Chart and compare Production Summary data over time by Basin, Field, Formation, Operator, State

For more information [www.ihsmarkit.com](http://www.ihsmarkit.com)

### CUSTOMER CARE AMERICAS

T +1 800 447 2273  
+1 303 858 6187 (Outside US/Canada)

### CUSTOMER CARE EUROPE, MIDDLE EAST, AFRICA

T +44 1344 328 300

### CUSTOMER CARE ASIA PACIFIC

T +604 291 3600

E CustomerCare@ihsmarkit.com

## About IHS Markit

IHS Markit (Nasdaq: INFO) is a world leader in critical information, analytics and solutions for the major industries and markets that drive economies worldwide. The company delivers next-generation information, analytics and solutions to customers in business, finance and government, improving their operational efficiency and providing deep insights that lead to well-informed, confident decisions. IHS Markit has more than 50,000 key business and government customers, including 85 percent of the Fortune Global 500 and the world's leading financial institutions. Headquartered in London, IHS Markit is committed to sustainable, profitable growth.