



IHS ENERGY

# IHS Kingdom<sup>®</sup> Gateway Plug-in for Petrel\* Software

**Streamline your interpretation to modeling workflow with the Kingdom<sup>®</sup> Gateway plug-in for Petrel\* software.**

As the industry continues to depend on advanced scientific software packages from multiple vendors, new tools are required to reduce the time spent in data transfers. From interpretation to modeling, IHS Kingdom software offers tools that make it easier to bridge the gap between software packages, freeing geoscientists to analyze data, rather than focusing on how to move it around.

The IHS Kingdom Gateway plug-in allows you to streamline the interpretation to modeling workflow. Using the Schlumberger Ocean\* software development framework, we have created a direct bridge between Kingdom and Petrel\* software. Data can be shared between Kingdom and Petrel software in the time it takes to drag and drop between projects.

Whether you need to populate your Petrel software project for the first time or want to augment your models with updated interpretation data, you can rely on the Kingdom Gateway plug-in to remove the need for intermediate file-loading steps.

## Version Requirements

Kingdom	Petrel
8.8 SP1	2012.x, 2013.x
2015	2013.x, 2014.x, 2015.x
2016	2015.x

New data types supported from Petrel to Kingdom, ensuring your asset team is using the same information.

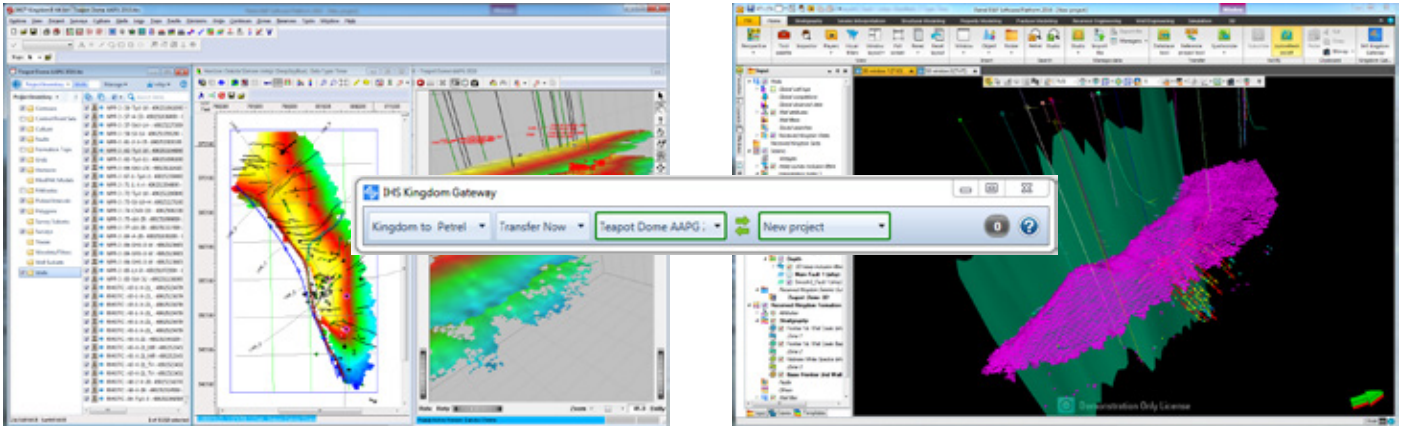
Data Type	Kingdom to Petrel	Petrel to Kingdom
Wells	x	new
Deviation Surveys	x	new
Time Depth Tables	x	new
Digital Log Curves	x	new
Formation Tops	x	x
Interpreted Grids	x	x
Faults	x	
Survey Geometry	x	
Horizons	x	

For interpreters, the Kingdom Gateway plug-in provides:

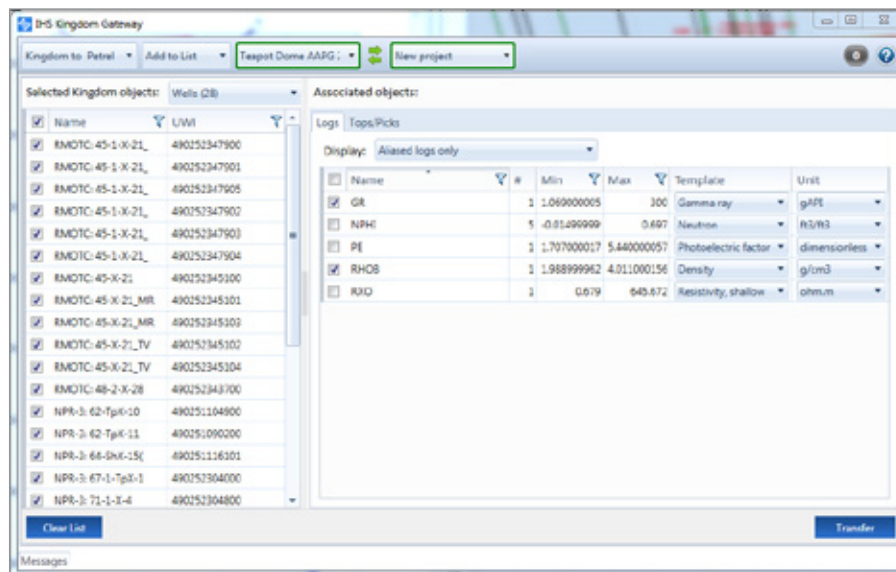
- Send Now method for immediate transfer to Petrel software
- Simple drag and drop data selection from Kingdom
- Interpretations generated or modified in Petrel software can be synchronized back to Kingdom

For data managers, the Kingdom Gateway plug-in provides:

- Methods to build a list of data to share from Kingdom, allowing you to set up a complete data set prior to sharing it to Petrel software
- The ability to select log curve suites based on simple names or Log Alias groups and assign Petrel software templates for proper loading
- Conflict resolution options to control data duplication



With the Kingdom Gateway plug-in, interpreters working in Kingdom will no longer have to break their interpretive train of thought to move critical information between Kingdom and Petrel software. This is one more example of how IHS continues to streamline the connections that enable interpreters to stop worrying about moving data so that they can instead focus on what's important—finding and developing oil and gas.



## For more information

[www.ih.com/kingdom](http://www.ih.com/kingdom)

### AMERICAS

Tel: +1 303 858 6840  
Email: [Global\\_Leads@ih.com](mailto:Global_Leads@ih.com)

### EUROPE / MIDDLE EAST / AFRICA

Tel: +44 (0) 1344 328300  
Email: [Global\\_Leads@ih.com](mailto:Global_Leads@ih.com)

### ASIA AND PACIFIC

Tel: +60 (0) 4291 3763  
Email: [Global\\_Leads@ih.com](mailto:Global_Leads@ih.com)