



IHS TECHNOLOGY

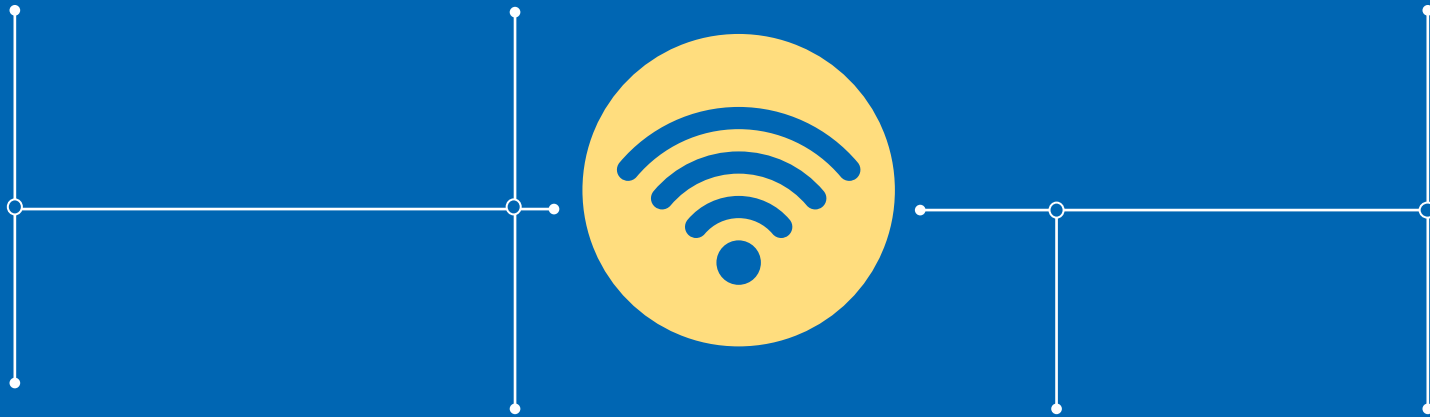
THE SMART HOME:

A LOOK INSIDE THIS
BURGEONING MARKET



IHS TECHNOLOGY

What's inside?

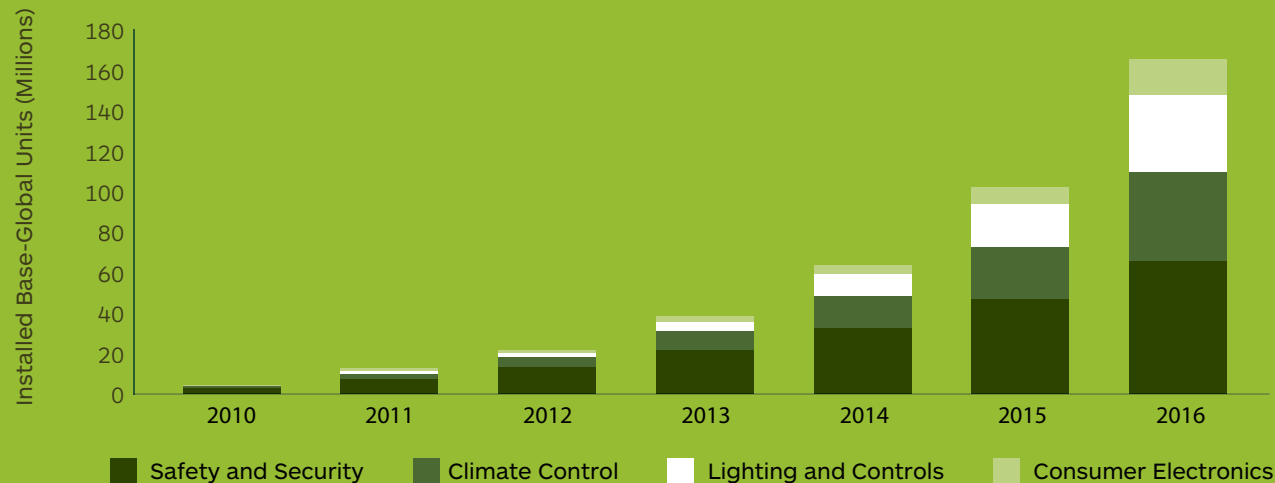


How is the smart home market evolving?

Globally, the installed base of smart home devices grew by over

161 million units from 2010 to 2016, driven by the delivery of smart home services by cable companies and security providers.

World market for connected home devices (excluding energy and water control)

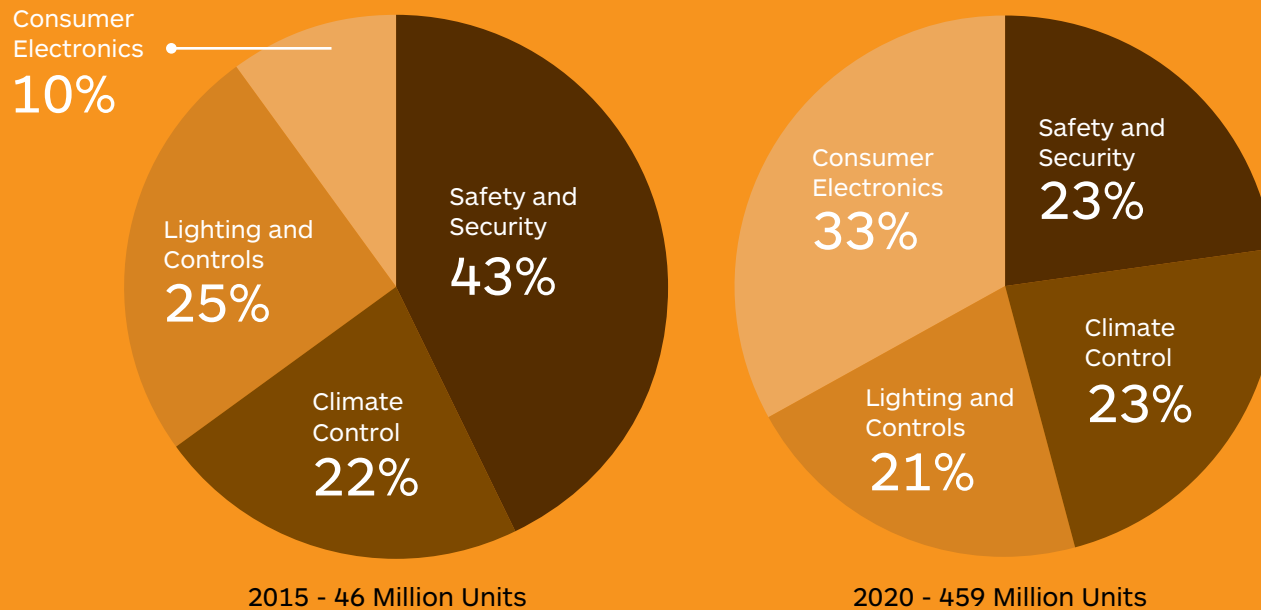


How do smart home safety and security device shipments compare with other device types?

The glue that holds the smart home together, **safety and security devices** represented nearly 43% of worldwide shipments in 2015.

By 2020 safety and security devices will represent only 23% of global shipments, eclipsed by **climate control and consumer electronics devices**.

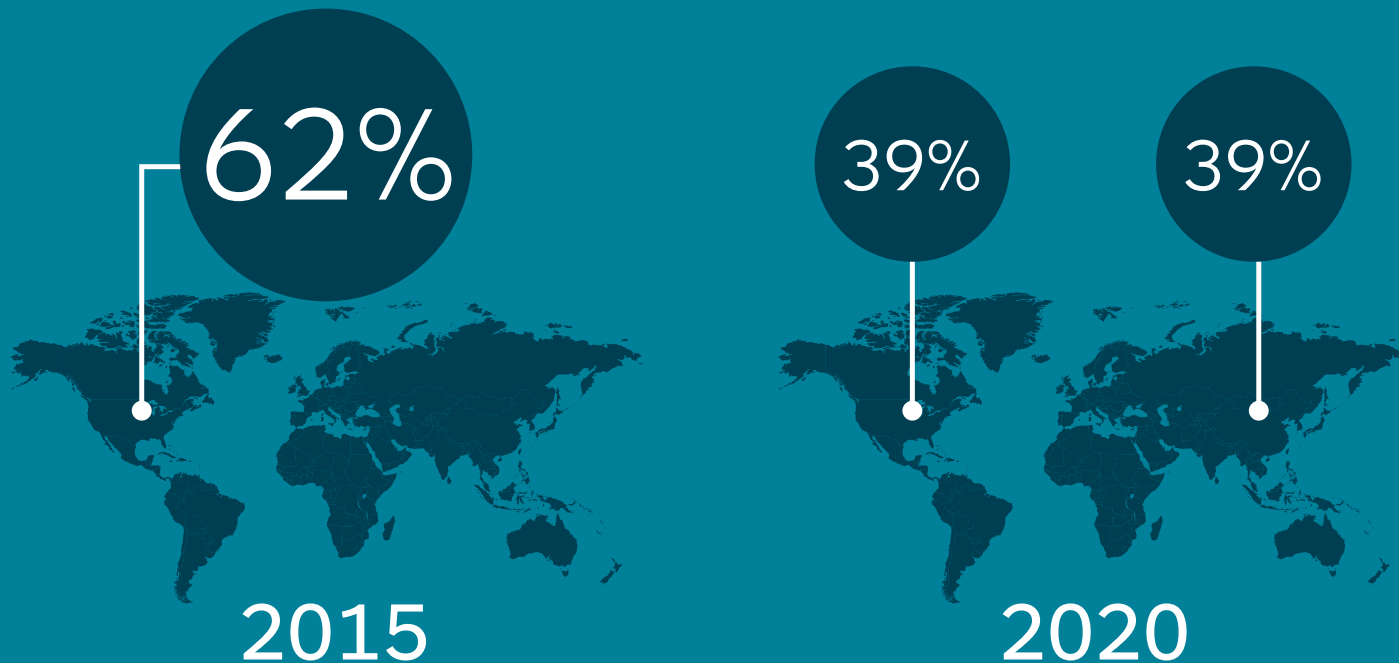
World market for connected home devices (excluding energy and water control)



How do the North American and Asian regions stack up for smart home solutions?

North America is the largest region for smart home solutions, representing about 62% of the global smart home market in 2015.

But by 2020, the Asian and North American regions will be nearly identical in size, each comprising around 39% of the worldwide smart home market.



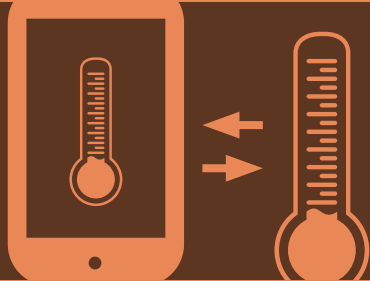
What percentage of the smart home market does 'multifamily' represent?

Not currently a primary target of cable companies and security providers, the **multifamily dwelling segment** is relatively untapped today, representing only about 4% of the overall smart home market.

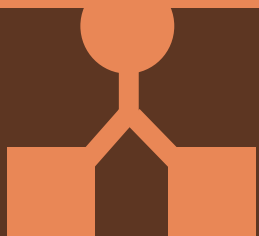
By 2020, nearly 20% of smart home device shipments will be for multifamily dwellings.



What are the options for managing a smart home?



Presently, most smart home solutions are **point devices**—meaning there is no integration between devices, with each device using its own app.



The second largest form of smart home control is through **discrete central hubs** that are often plugged directly into a router or gateway, bridging protocols such as ZigBee, Z-Wave and Wi-Fi.

Other options for controlling a smart home include integrated hubs such as **set-top boxes, televisions and gaming consoles**—which combined will comprise around 18% of smart home management in 2020.



Due to the proliferation of point devices and the use of tablets and tablet-like hubs to manage the home, **smartphones and tablets** are expected to account for about 3/4 of smart home control in 2020.

How much of the global professional security monitoring market is devoted to smart home?

20%

2015



50%

2020



Find out more

IHS Markit's **Smart Home Intelligence Service** covers the entire smart home ecosystem, building on research from over 10 dedicated teams focused in key areas such as consumer electronics, medical technology, telecommunications, security, automotive, and power and energy. Drawing on knowledge and expertise in these industries, the service provides actionable and timely analysis for all players involved in the smart home.

Safety and Security:

- Garage door operators
- Hazard detection
- Electronic locks
- Video (cameras, doorbells)
- Intruder alarms

Climate Control:

- Fans
- Radiator valves
- Thermostats
- Air conditioners

Lighting and Controls:

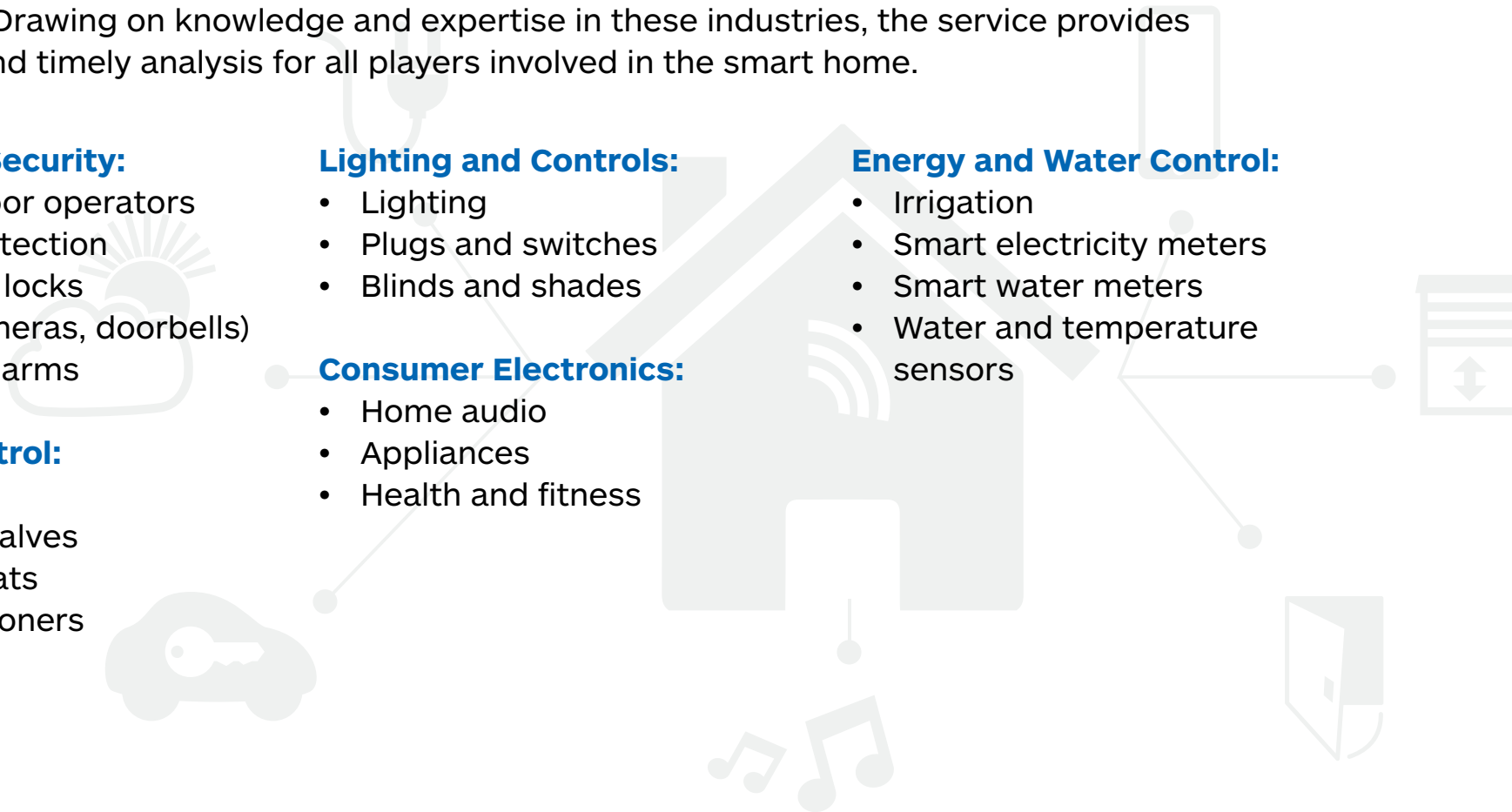
- Lighting
- Plugs and switches
- Blinds and shades

Consumer Electronics:

- Home audio
- Appliances
- Health and fitness

Energy and Water Control:

- Irrigation
- Smart electricity meters
- Smart water meters
- Water and temperature sensors



IHS TECHNOLOGY

About IHS Markit

IHS Markit (Nasdaq: INFO) is a world leader in critical information, analytics and solutions for the major industries and markets that drive economies worldwide. The company delivers next-generation information, analytics and solutions to customers in business, finance and government, improving their operational efficiency and providing deep insights that lead to well-informed, confident decisions. IHS Markit has more than 50,000 key business and government customers, including 85 percent of the Fortune Global 500 and the world's leading financial institutions. Headquartered in London, IHS Markit is committed to sustainable, profitable growth.

technology.ihs.com

 @IHS4Tech

Contact Us

The Americas

Tel: +1 855 323-3363

Tel: +1 719 265-1535

Email: Technology_us@ihsmarkit.com

Europe, Middle East & Africa

Tel: +44 1344 328300

Email: Technology_emea@ihsmarkit.com

Asia Pacific

Tel: +604 291-3600

Email: Technology_apac@ihsmarkit.com