



# Interpreted Formation Tops & Online Structure Contours

## Conduct fast geological reconnaissance of key US basins

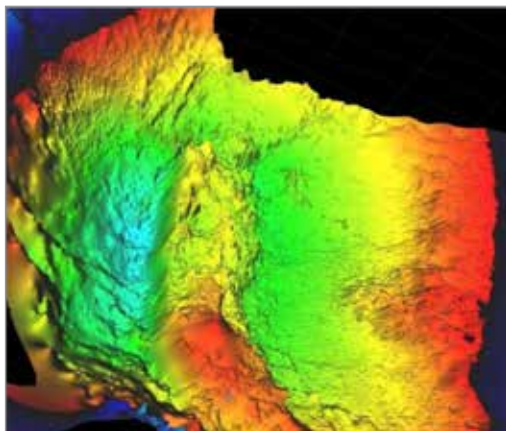
IHS Markit Interpreted Formation Tops & Online Structure Contours – covering nearly 861,000 US wells (9,000,000 Tops picks) – enable you to see a basin's geological overview, understand its structure and stratigraphy, and create regional maps. Geologists, geophysicists, technologists, and exploration managers can quickly and easily leverage these geologist-picked tops to:

- Generate prospects faster using improved log correlations
- Validate new and existing prospects against unbiased data and within a regional context
- Map gross geologic structures using a consistent stratigraphic framework for an entire basin
- Understand a basin's depositional environment – trap components, source rock pathways, faults, domes, and hydrocarbon maturation
- Inform acquisition analysis

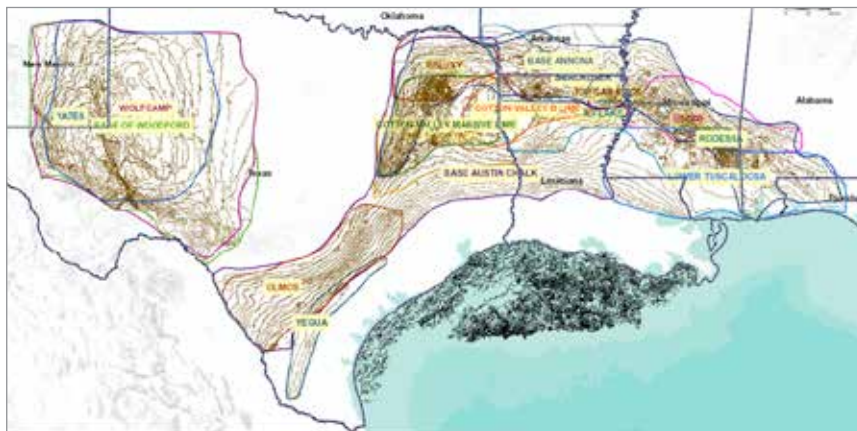
## Understand the stratigraphic and structural geology of your area of interest

IHS Markit Interpreted Tops are constructed and verified by experienced geologists using loop-tied cross sections, delivering you the benefit of hundreds of “man years” invested in making geological correlations and well-by-well examinations. Structure Contours provide an additional layer of insight by providing a reliable regional overview of your area of interest, at your fingertips.

- Tops updated daily and delivered via Enerdeq™/Web Services and tied to IHS Markit Well Data
- Direct Connect into PETRA™, Kingdom™, or other geological modeling applications for mapping gross geologic structures
- New bench correlations in key plays
- Hand contoured maps via Enerdeq™
- Well Spots updated Daily in Enerdeq™ & Web Services
- Enerdeq Map: Faults, well spots, select contours, grid, culture, topo maps, satellite imagery
- Interpreted Formation Tops data available for the following regions; Structure Contours are available for regions marked (\*)
  - TX 1-4\*
  - TX 5, 6, 9, 7B\*
  - KS, TX 10, OK Panhandle
  - Permian Basin\*
  - Oklahoma
  - N. LA & AR\*
  - S. LA\*
  - Southeastern\*
  - Rocky Mountain
  - Gulf of Mexico\*
- PRODFit: in select Basins, Well and Tops Data subscribers get the added bonus of PRODFit, in which the Interpreted Formation Tops are leveraged to bring new insights to historical and current Well Data, greatly enhancing producing formation details and adding clarity to unconventional plays



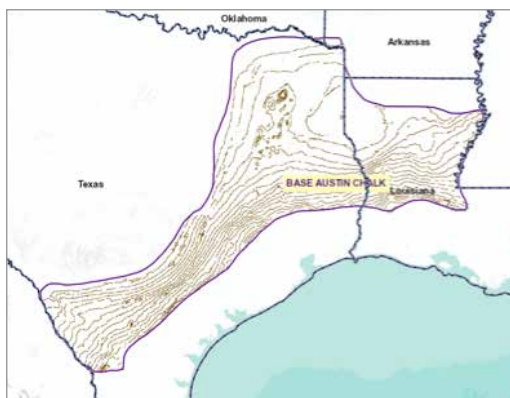
Permian Basin: Wolfcamp Structure created with Interpreted Formation Tops; Kingdom



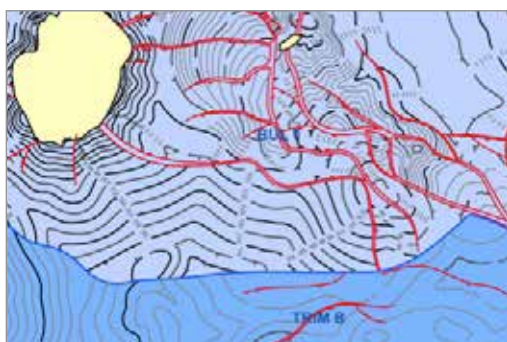
Coverage Map of the Structure Contours; Enerdeq



Permian Basin: Wolfcamp Structure; Enerdeq



Gulf Coast: Base of Austin Chalk Structure; Enerdeq



Gulf of Mexico: Contours, Faults, Salt; Enerdeq



Onshore: Contours, Faults, Producers; Enerdeq

For more information [www.ihsmarkit.com](http://www.ihsmarkit.com)

#### CUSTOMER CARE

##### NORTH AND SOUTH AMERICA

**T** +1 800 447 2273  
+1 303 858 6187 (Outside US/Canada)

##### EUROPE, MIDDLE EAST AND AFRICA

**T** +44 1344 328 300

##### ASIA PACIFIC

**T** +604 291 3600

**E** [CustomerCare@ihsmarkit.com](mailto:CustomerCare@ihsmarkit.com)

## About IHS Markit

IHS Markit (Nasdaq: INFO) is a world leader in critical information, analytics and solutions for the major industries and markets that drive economies worldwide. The company delivers next-generation information, analytics and solutions to customers in business, finance and government, improving their operational efficiency and providing deep insights that lead to well-informed, confident decisions. IHS Markit has more than 50,000 key business and government customers, including 85 percent of the Fortune Global 500 and the world's leading financial institutions. Headquartered in London, IHS Markit is committed to sustainable, profitable growth.