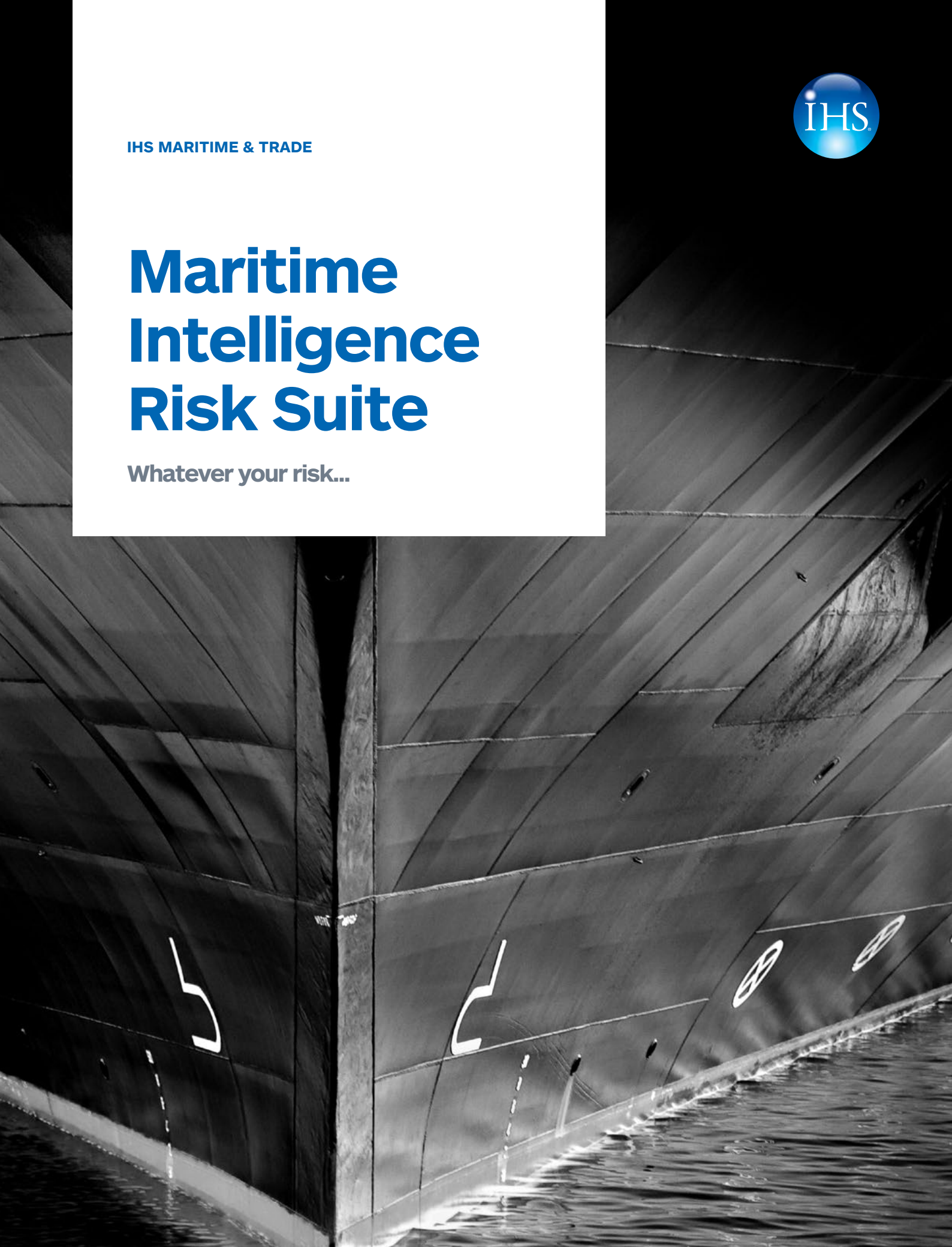


IHS MARITIME & TRADE

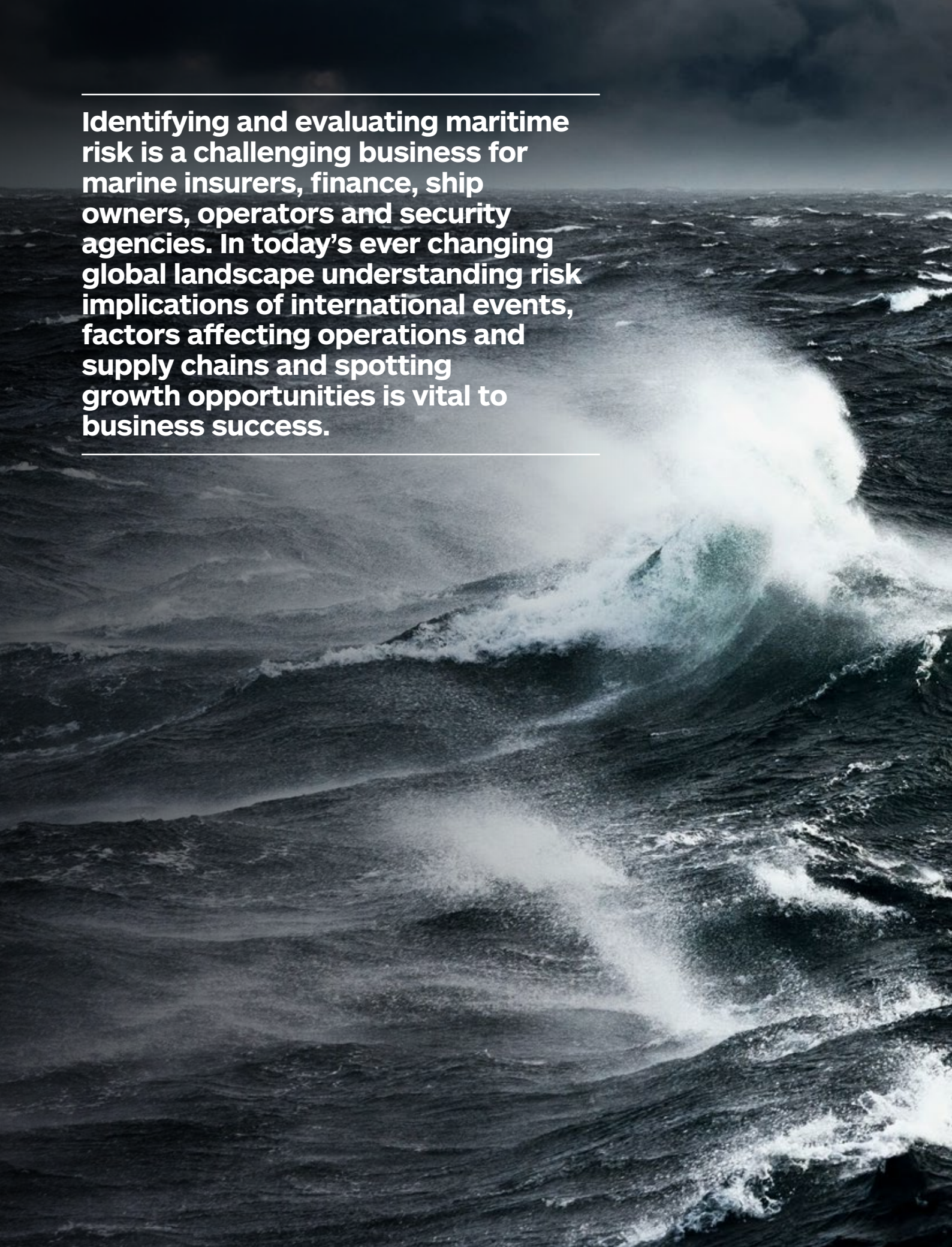


Maritime Intelligence Risk Suite

Whatever your risk...



Identifying and evaluating maritime risk is a challenging business for marine insurers, finance, ship owners, operators and security agencies. In today's ever changing global landscape understanding risk implications of international events, factors affecting operations and supply chains and spotting growth opportunities is vital to business success.



Minimising exposure to risk and maximising your operational efficiency requires reliable and accurate in-depth knowledge and insight. Whether your risk relates to operations, monitoring and surveillance, piracy, war or other risks that could potentially impact your business, IHS Maritime Intelligence Risk Suite provides the insight you need to give your business a competitive advantage.

Maritime Intelligence (Powered By Sea-web)

- Ships, companies and builders
- Ports, terminals and berths
- Country & security risk
- Risk events including casualty, piracy and marine pollution
- Analysis view providing interactive data visualisation charts
- Industry news
- Maritime companies

Interactive Mapping (Powered by AISLive)

- Live & historical satellite & terrestrial coverage
- Historical ship tracking
- Port arrivals
- Port Risk Ratings and Filters
- Port Facility Filters
- Joint War Risk Committee (JWC) war risk zones
- Emission Control Area (ECA) zones
- Risk events map layer
- Traffic density map for identifying high/low areas of ship traffic

Alerting & Monitoring

- Watch & monitor ships of interest
- Be alerted on changes to a ships itinerary
- Notification Timeline - Quickly view all your notifications
- Events Alerts Service (unverified by IHS)
- Bespoke zones to monitor ships of interest entering

The Maritime Intelligence Risk Suite

Powered by Sea-web™ and AISLive, integrates intelligence from IHS Economics & Country Risk, Aerospace & Defence, and a newly developed Risk Events database.

The suite provides the tools and intelligence needed to identify, evaluate, monitor and forecast potential risks to your business.



SEARCH

Powered by Sea-web

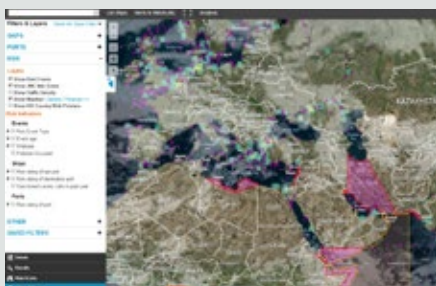
Search unrivalled intelligence on ships, owners, operators, managers, builders, ports, terminals and berths, maritime companies and casualty & risk events. View technical specifications, class, flag, commercial history, Port State Control events, port risk ratings and historical ports of call. Search results can be refined, filtered, exported, visualised in a quick analysis view and ships displayed in map view.



MAP

Powered by AISLive

Visualise, search and track real-time AIS ship positions of the world's fleet, identify port congestion, view weather forecasts and voyage history on a state of the art interactive map. Watch an unlimited number of ships and receive alerts on itinerary changes. The map provides extensive filter and layer options to refine results to display and links to further details. Real time intelligence reports provide quick analyse and overview of ships visible on map.



RISK TOOLS

Risk Event Information & Mapping

A newly developed risk events database which includes casualty, piracy and pollution events allows you to search for specific events, export data for in-house analysis, run reports, view event analysis charts and visualise on the interactive map. The maps risk layers display the last three years of risk events, JWC war zones, ECA zones and traffic density with the ability to filter by event type, event age and ship type.



Know your customers

The combination of IHS Maritime & Trade intelligence enables you to evaluate and build ship/company risk profiles of your customer's and competitor's. Search current and historic intelligence on ships, owners, shipbuilders, companies, casualty & risk events, review Port State Control details, understand a ship's trading pattern and port calling history. Visualise and analyse your results using interactive charts for performance and operational benchmarking and to gain a granular level view of the world fleet and global risk events.

Identify Maritime Threats

Understand global and local threats posed by the shipping fleet, view and research maritime risk events. Search a newly developed risk events database that includes casualty, piracy and pollution events to identify high or low areas of risk and forecast potential risks. Use the maps risk layers to help visualise maritime risk events, JWC war zones, ECA zones and traffic density with the ability to filter by event type, event age and ship type for further granularity. Access to timely and accurate intelligence is key for planning operations, reducing risk and acting immediately.

Understand Operational Risks

Optimise operational efficiency to reduce costs and reduce potential risks to operations and supply chains. Visualise, search and track real-time AIS ship positions of the global fleet when transiting through high risk zones. View a ports risk rating, evaluate port traffic and view weather forecasts to help plan your voyage on a state of the art interactive map. Watch an unlimited number of ships and receive alerts on itinerary changes. Use the Suite's maritime tools to determine competitor activity, undertake operational analysis and benchmark performance.

Forecast & Analyse Risk

Access to reliable and accurate maritime data provides you with the information and tools needed to conduct research and gather detailed information on the global fleet, technical ship specifications, trading patterns and risk event analysis. Forecast change in trends that may affect future premiums and business opportunities. Access to comprehensive maritime data sources helps effective risk assessment and strategic planning to minimise cost implications to your business. The Maritime Intelligence Risk Suite's analysis view provides interactive data visualisation of search results that can be exported for further analysis and assist in developing risk rating models.

Supporting your business decisions

Insurance & Finance

Customer Vetting, Assessing & Forecast Analysis

- Undertake ship and company research
- Monitor Port State Control Events
- Identify ownership levels
- Monitor ships in high risk zones
- Search casualty & risk events
- View port risk ratings
- Identify global trading patterns
- Analyse live and historical movements
- Understand market share

National Security

Identifying, Monitoring & Forecasting Security Risks

- Verify ships in your waters
- Identify ships in high risk areas
- Mid-ocean, coastal & port monitoring
- Monitor ships in custom zones
- Live & historical ship tracking
- Live alerts service with latest updates
- Piracy and security intelligence
- Risk event analysis

Ship Owners/Operators

Operational Efficiency & Risk Management

- Track a fleet in real-time
- Analyse a fleet's movement history
- Evaluate risk when voyage planning
- View weather forecast intelligence
- Know if a ship enters a high risk area
- Identify a vessel's chartering risks
- Analyse and benchmark performance
- Monitor competitor activity



Maritime & Trade Insight

Why IHS Maritime & Trade?

IHS is the leading source of critical maritime and trade insight, enabling organizations, policy makers and security to navigate today's complex trading environment.

Successfully managing inter-connected global supply chains requires a detailed understanding of continually evolving patterns of international trade flows, and with over 90% of international trade being transported by ship, success requires an in-depth understanding of the shipping industry.

IHS is the sole originating source for assigning IMO Ship and Company numbers, guaranteeing an unmatched level of accuracy and depth of coverage for vessel characteristics and ownership data. We hold the world's largest ship and company databases and our Maritime solutions legacy spans over 250 years. Successful trading decisions rely upon the latest information on international trade flows, as well as real-time intelligence on the precise locations of cargos on their way to global markets.

For shipping companies, success requires staying one step ahead of your competition.





ABOUT IHS

IHS (NYSE: IHS) is the leading source of information, analytics and expertise in critical areas that shape today's business landscape. Businesses and governments in more than 140 countries around the globe rely on the comprehensive content, expert independent analysis and flexible delivery methods of IHS to make high-impact decisions and develop strategies with speed and confidence. IHS has been in business since 1959 and became a publicly traded company on the New York Stock Exchange in 2005. Headquartered in Englewood, Colorado, USA, IHS is committed to sustainable, profitable growth and employs nearly 9,000 people in 33 countries around the world.

For more information

www.ihs.com/MIRS

AMERICAS

Tel: + 1 800 447 2273
Email: marketing@ihs.com

EUROPE, MIDDLE EAST AND AFRICA

Tel: + 44 (0) 1344 328 300
Email: marketing@ihs.com

ASIA PACIFIC

Tel: + 65 6439 6000
Email: marketing@ihs.com

