



# IHS Petra 3D Visualization Module

Display geological information in 3D for analysis, well planning and presentation.

---

The IHS Petra® integrated 3D Visualization Module is designed to give geologists, engineers, and technologists the ability to produce a complete three dimensional view of their Petra projects.

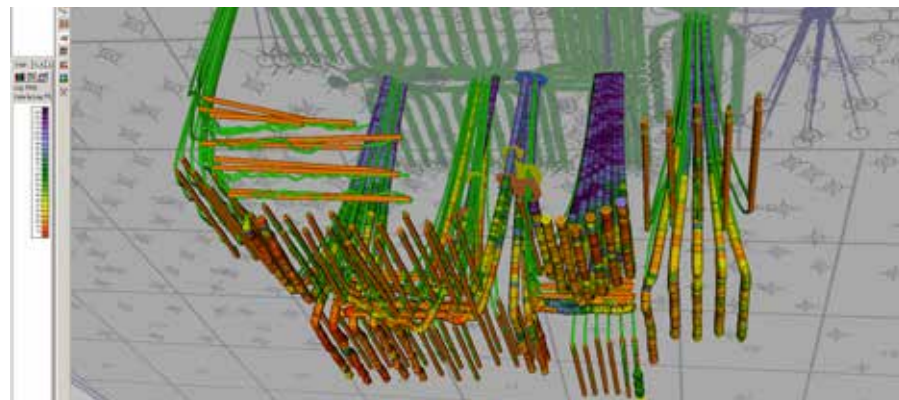
---

**Get Started** The 3D Visualization Module is tied directly to the Petra database, so no data imports or exports are required. The information you need is right at your fingertips to simplify and improve your workflow.

**Work in Multiple Modes** 3D Visualization is available in both depth and time modes to help you fully integrate your seismic interpretations and geophysical workflows.

**Create Cross Sections** Cross sections created in Petra's Cross Section Module can be saved and loaded directly into the 3D Visualization Module as fence diagrams. The annotations, interpretations and color fills on the cross section can then be used to assist in your 3D workflows.

**View Well Information** Quickly and easily view your wells from the Petra Main Module. Wells can also be selected from queries or previously created well lists to focus your investigation and analysis on just the wells you need.



Analyze directional drilling results in 3D to fully understand reservoir performance.

## Post Well Information

Well information can be displayed along the boreholes in 3D to aid in your analysis:

- Tops: Customize the look by specifying custom sizes, styles and colors.
- Shows: Highlight oil and gas shows along the wellbore.
- Perforations: Display perforations in 3D to aid in the planning and analysis of your completions.
- Digital Log Curves: Digital log information can be displayed along the wellbores to assist in geological and engineering analyses.
- Dipmeter Data: Dipmeter planes can be displayed along the borepath.

## Overlay Files

Any overlay layers that have been created and saved in the Map Module can be opened in the 3D window. Visualize your well information in 3D with an overlay of land postings, grid and culture information or your geological annotations.

## Display Gridded Surfaces

Display gridded surfaces created in the Map Module in true 3D to easily see the structures that are present. In addition, you can analyze well placement and horizontal drilling successes.

## Project Depth Planes

Select a depth and project a flat plane at that depth to aid in the visualization of intersections of fluid contacts or drilling targets with your wells and surfaces.

## Pan, Zoom & Rotate

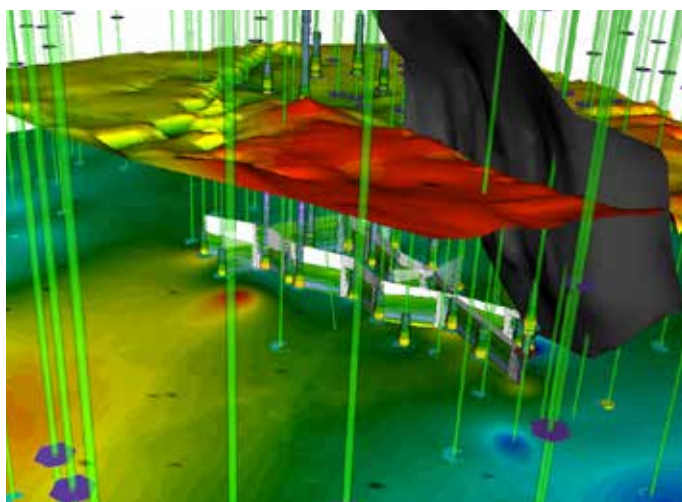
Easily pan, zoom and rotate the 3D view with your mouse to increase the speed and flexibility of your workflow.

## Create Professional Prints & Outputs

Print a 3D image with a title block for inclusion in your presentations, or easily capture a screen image to paste into applications such as Microsoft™ PowerPoint. Impress your managers and colleagues with both hardcopy and digital outputs.

## Increase Vertical Exaggeration

Analyze subtle features of your play by increasing the vertical exaggeration to emphasize small lateral changes in elevation.



See the whole picture in stunning 3D with Petra's 3D Visualization Module.

---

## PETRA CUSTOMER CARE

1-800-447-2273 x3

7:00 AM CST – 6:00 PM CST

Email: [petrasupport@ihs.com](mailto:petrasupport@ihs.com)

User Forum: [ihscommunity.com/energy](http://ihscommunity.com/energy)

[www.ihs.com](http://www.ihs.com)

## ABOUT IHS

IHS (NYSE: IHS) is the leading source of information, insight and analytics in critical areas that shape today's business landscape. Businesses and governments in more than 150 countries around the globe rely on the comprehensive content, expert independent analysis and flexible delivery methods of IHS to make high-impact decisions and develop strategies with speed and confidence. IHS has been in business since 1959 and became a publicly traded company on the New York Stock Exchange in 2005. Headquartered in Englewood, Colorado, USA, IHS is committed to sustainable, profitable growth and employs about 8,800 people in 32 countries around the world.