



# IHS Petra Cross Section Module

Display and analyze your data graphically.

The IHS Petra® integrated Cross Section Module provides the base for producing easily customizable cross section displays, in addition to rapid editing of data and production of stunning graphical outputs.

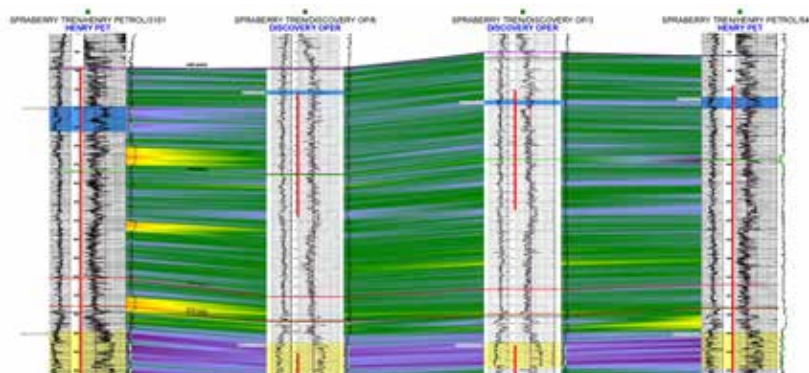
### Choose the Cross Section for Your Workflow

Petra's Cross Section Module has four types of cross sections that enable you to work in the most appropriate way for your unique data and workflow:

- Single Well: One well is displayed for analysis and printing.
- Well-to-Well: The most basic type of cross section, which simply connects selected wells in a line.
- Line and Wells: This cross section type is useful for directional well analysis. A projection line is drawn on the map, and wells are selected to be projected onto that line. It is also useful for working in structurally complex regions.
- Line and Corridor: Similar to the Line and Wells cross section, this section requires a projection line, but wells are selected from a rectangular corridor around the line, rather than being hand-picked.

### Easily Set Depth Ranges

Petra's cross section can be set to a user-specified depth range (top and bottom), or can be automatically set to the top and base of the selected logs or tops.



Petra cross section showing interpretive color fill functionality, which lets you rapidly interpolate between wells based on log data.

### **Shift Depth Datums Easily**

The depth datum can easily be shifted from elevation (structural) to a particular top (stratigraphic) to let you fully analyze and understand both the depositional environment and the current structural setting.

### **Display Contour Grids**

Gridded surfaces can be displayed in profile along the cross section, helping you with quality control and prospective well location selection.

### **Post Log Curves**

Log curves, both digital and raster, can be displayed in the cross section. Petra has a variety of options to help you better understand your digital curve data:

- **Color Fill:** In addition to being able to select the curve color, you can also select a color fill to highlight zones of interest. The color fill can be solid or shaded, based on the values of the logs.
- **Curve Cut-Offs:** A cut-off value can be applied to the color fill to highlight only the high or low values.
- **Cross-Over Fills:** Highlight hydrocarbon zones with Petra's cross-over color fills.

### **Pick Formation Tops**

Select formation tops to display from Petra's database. Multiple sources of tops can be arranged in a hierarchy to ensure that data is always available on your cross section. For example, you can show tops that you or a co-worker have picked, and if those tops are missing, Petra can fill in the gaps with high-quality tops from the IHS Information Hub database.

### **Interpolate Between Wells**

Petra's Interpretive Color Fill feature interpolates the values of well logs between wells. It can help you to graphically identify depositional features and potential hydrocarbon-bearing zones.

### **Edit & Manipulate Digital Log Information**

The Cross Section Module has numerous features to help you quality check and organize your log information:

- Depth Shifting of digital and raster log data
- Amplitude Shifting of digital log curves to normalize between wells
- Interpolation of values to help fill in gaps between log runs based on the values at the top and base of the gap

### **Pick & Display Fault Gaps**

Fault gaps can be picked and graphically displayed in the cross section to aid in your geological interpretations. Faults can also be drawn between the wells, and tops can be offset along the fault lines.

### **Overlay & Annotate**

To assist you in your interpretation workflow, Petra's Cross Section Module includes full annotation and overlay tools. Draw, mark-up and annotate any geological or engineering-related data necessary on your cross section.

### **Display Cored & Completed Zones**

Petra can post core, lithology, test and other data types from the Petra database along your wells so you can easily visualize intervals and completions.

### **Analyze Production**

Production data charts can be posted in the well footer to assist in reservoir analysis.

### **Create Professional Prints & Outputs**

Petra's powerful printing capabilities let you quickly produce stunning graphical outputs either on paper or digitally. Impress your colleagues and managers with your Petra maps and analyses.

---

#### **PETRA CUSTOMER CARE**

1-800-447-2273 x3  
7:00 AM CST – 6:00 PM CST  
Email: [petrasupport@ihs.com](mailto:petrasupport@ihs.com)  
User Forum: [ihscommunity.com/energy](https://ihscommunity.com/energy)  
[www.ihs.com](http://www.ihs.com)

#### **ABOUT IHS**

IHS (NYSE: IHS) is the leading source of information, insight and analytics in critical areas that shape today's business landscape. Businesses and governments in more than 150 countries around the globe rely on the comprehensive content, expert independent analysis and flexible delivery methods of IHS to make high-impact decisions and develop strategies with speed and confidence. IHS has been in business since 1959 and became a publicly traded company on the New York Stock Exchange in 2005. Headquartered in Englewood, Colorado, USA, IHS is committed to sustainable, profitable growth and employs about 8,800 people in 32 countries around the world.