



# IHS Petra Directional Well Module

New functionality to plan,  
analyze and display horizontal &  
directional wells.

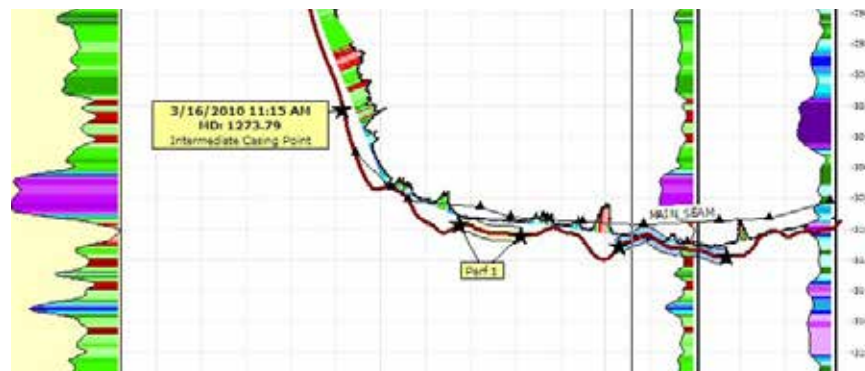
The IHS Petra® integrated Directional Well Module provides a new interface to improve your horizontal and directional drilling workflows. With Petra, you can:

- Enhance gridded surfaces with repeated tops along horizontal wellbores
- Quickly plan wells and load drilling data
- Analyze horizontal well performance and post results
- And much more

## Iterative Planning Workflow

Petra's Directional Well Module features an easy-to-use Well Planning wizard to guide you through the steps of planning a well. The iterative planning workflow allows you to perfect your well design before finalizing it by placing your well's surface, landing and bottom hole locations based on entered coordinates, other wells, or by clicking on the integrated map view.

Depths of the landing and bottom hole locations can be manually entered or automatically calculated from one or more gridded surfaces, enabling you to easily design wells within your required geological parameters! As an added advantage, all planned wells are stored in the Petra database for future data loads and analyses.



Petra's new Directional Well Module showing a horizontal well, two vertical offset wells, shaded digital log data, tops & event data.

### **Easily View Horizontal Wells**

The Vertical Section Plane view allows you to view your well in the Profile View with just one click. It rescales to fit the horizontal well automatically, eliminating the need for time-consuming trial-and-error rescaling.

### **Contour Grid Display**

Gridded surfaces can be displayed in the Profile View, to aid quality control and well performance analysis.

### **Drag-and-Drop Depth Adjustments**

Easily drag-and-drop to change the depths being viewed in the Profile View. Quickly rescale the window to view a new depth of interest and highlight the features you are interested in analyzing.

### **Post Log Curves**

Digital log curves can be displayed in the Profile View and posted in both a vertical and horizontal track, or along the horizontal borepath in question. Petra has a variety of options to help you better understand your digital curve data:

- **Color Fill:** In addition to being able to select the curve color, you can also select a color fill to highlight zones of interest. The color fill can be solid or shaded, based on the values of the logs.
- **Curve Cut-Offs:** A cut-off value can be applied to the color fill to highlight only the high or low values.
- **Cross-Over Fills:** Highlight hydrocarbon zones with Petra's cross-over color fills.

### **Display Multiple Formation Tops**

Select formation tops from Petra's database and arrange multiple sources of tops in a hierarchy to ensure that data is always available in the Profile View. For example, you can show tops that you or a coworker have picked, and in the event of missing tops, Petra can fill in the gaps with high-quality tops from the IHS database.

### **Pick Repeat Formation Tops**

The Directional Well Module allows you to easily pick repeated formation tops along your horizontal wellbore. You also have the ability to pick extrapolated tops above and below your wellbore to guide your formations, even when you have not penetrated the boundaries of your target formation.

### **Quickly Re-Grid Surfaces**

Once you have picked repeated tops along your horizontal wells, quickly re-grid the formation tops using Petra's shortcut functionality. Quality checking has never been this fast and easy!

### **View Well Events**

Events are a new data type in the Directional Well Module. You can now post and use any data or information collected during the drilling of the well along the well path. For example, zones of high gas kicks can be highlighted and annotated, casing points can be noted, and rig events tracked. All data stored as events are stored in the Petra database, and are always available and ready for future use.

### **Integrate with the 3D Visualization Module**

Petra's Directional Well Module includes a quick link to the 3D Visualization Module, enabling you to quickly focus in on your current wells for 3D analysis and viewing.

### **Create Professional Prints and Outputs**

Petra's powerful printing capabilities let you easily produce stunning graphical outputs either on paper or digitally. Impress your colleagues and managers with your Petra maps and analyses.

### **Display Overlays**

The Map window in the Directional Well Module includes the ability to open any saved overlay from the Map Module. Save time by using your existing overlays for well planning and analysis.

---

#### **PETRA CUSTOMER CARE**

1-800-447-2273 x3  
7:00 AM CST – 6:00 PM CST  
Email: [petrasupport@ihs.com](mailto:petrasupport@ihs.com)  
User Forum: [ihscommunity.com/energy](http://ihscommunity.com/energy)  
[www.ihs.com](http://www.ihs.com)

#### **ABOUT IHS**

IHS (NYSE: IHS) is the leading source of information, insight and analytics in critical areas that shape today's business landscape. Businesses and governments in more than 150 countries around the globe rely on the comprehensive content, expert independent analysis and flexible delivery methods of IHS to make high-impact decisions and develop strategies with speed and confidence. IHS has been in business since 1959 and became a publicly traded company on the New York Stock Exchange in 2005. Headquartered in Englewood, Colorado, USA, IHS is committed to sustainable, profitable growth and employs about 8,800 people in 32 countries around the world.