



IHS ENERGY

# IHS Petra Map Module

Display and analyze your data graphically.

The IHS Petra® integrated Map Module provides the base for producing easily customizable map displays and allows you to quickly edit data and create cross sections. With Petra, you can easily load, edit and display cartographic data, including grid and culture information, to assist in reservoir analysis and location picking.

## **Integrate the Surface Picture**

Petra includes a connection to Valtus Ortho Imagery to reduce the cycle time on location picking and facility planning by tying the surface land picture to your subsurface interpretations.

## **Leverage your Reservoir Knowledge**

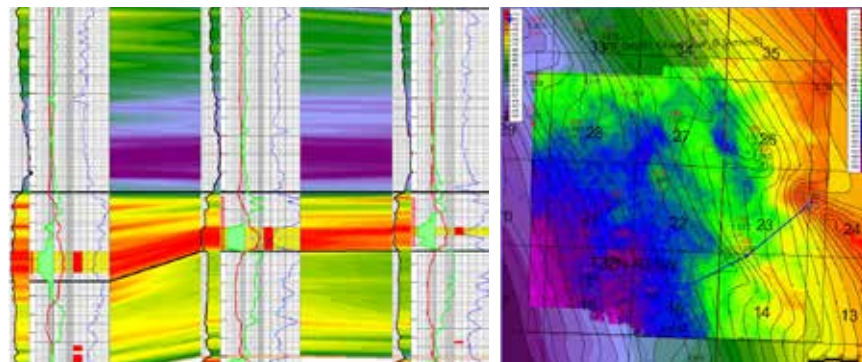
Data from the Petra database can be posted on the map, letting you work quickly to analyze competitor activity and reservoir performance.

## **Post Log Curves**

Log curves, both digital and raster, can be clipped and posted at the well location to assist in hand-contouring and analysis of drilling success.

## **Analyze Production**

Production data charts can be posted at the well location to display the spatial distribution of top producers and assist in reservoir analysis. Bubble Maps are easily created and customized to display production attributes at the well location.



Display and analyze your data graphically. Quickly and easily produce presentation-ready maps, including contours, bubble maps, cross sections and more.

### **Generate Contour Maps**

Petra's contouring functionality provides easy-to-use default settings with advanced options to fit all workflows.

### **Integrate your Analysis**

Hand-contouring in Petra is simple, and provides you with the geological background information required for accurate computer contouring.

### **Display Cored and Completed Zones**

Petra can post core, lithology and other data types from the Petra database along the wellpath of horizontal and directional wells so you can easily visualize intervals and completions.

### **Query and Search**

Petra's comprehensive query tool lets you quickly locate wells with the attributes and information you need. Attribute Map functionality graphically shows you the wells that match single or multiple queries.

### **Highlight Wells or Locations**

Petra includes a variety of highlight symbols that can be placed on the map to indicate future drilling locations, wells of note, and other important features.

### **Incorporate Seismic Information**

Seismic shot point data can be posted on the map and contoured upon to integrate your geological and geophysical workflows.

### **Perform Production Pattern Analysis**

Quickly analyze your producer and injector patterns by defining a node well and surrounding wells. Production can be summarized for each group of wells and displayed, and the area of each group can be used in volumetric calculations.

### **Calculate & Display Drainage Ellipses**

Petra enables you to calculate and display drainage ellipses at your well locations, visualize your drainage patterns, and easily pick infill drilling locations.

### **Optimize Well Location Selection**

Use information from the Petra database in combination with contour maps to quickly and easily pick optimal well locations. Wells can be spotted by clicking on the map or by entering coordinates from a survey plat. Wells can also be entered at a given spacing based on a quarter-section grid to quickly produce a large number of locations per section.

### **Create Cross Sections**

Graphically select wells to include in cross sections from the map. Petra includes four types of cross sections to enable you to use the most appropriate projection for your data, wells and workflows. Query tools make it easy to select only the wells containing the information you need.

### **Perform Volumetric Calculations**

Petra's volumetric calculation routines can calculate volumes and reserves using a variety of customizable industry-standard calculations. Volumes can be extracted for each overlay polygon (sections, townships, etc.) or for hand-drawn areas (pools, fields). Excel-based reporting formats are easy-to-use in other applications or store for future reference.

### **Create Professional Prints & Outputs**

Petra's powerful printing capabilities let you quickly produce stunning graphical outputs whether on paper or in digital formats. Petra can automatically arrange posted data to ensure that all posted data is legible. This functionality reduces overlap when data is posted at closely spaced well locations.

---

#### **PETRA CUSTOMER CARE**

1-800-447-2273 x3  
7:00 AM CST – 6:00 PM CST  
Email: [petrasupport@ihs.com](mailto:petrasupport@ihs.com)  
User Forum: [ihscommunity.com/energy](http://ihscommunity.com/energy)  
[www.ihs.com](http://www.ihs.com)

#### **ABOUT IHS**

IHS (NYSE: IHS) is the leading source of information, insight and analytics in critical areas that shape today's business landscape. Businesses and governments in more than 150 countries around the globe rely on the comprehensive content, expert independent analysis and flexible delivery methods of IHS to make high-impact decisions and develop strategies with speed and confidence. IHS has been in business since 1959 and became a publicly traded company on the New York Stock Exchange in 2005. Headquartered in Englewood, Colorado, USA, IHS is committed to sustainable, profitable growth and employs about 8,800 people in 32 countries around the world.